



## Mechanised Arboriculture

Fast, safe, affordable vegetation clearance.  
Safer and more efficient than chainsaws!

HUMAN NATURE:  
AT ITS BEST

Ground Control has been delivering mechanised vegetation and land clearance and management services since 1973. Our award-winning teams use the most advanced machinery to bring maximum efficiency and value to any large construction, rail or maintenance project.

### Why choose our mechanical arb solutions?



#### Safety:

Our ROPs, TOPs, FOPs, and FISA compliant machinery effectively reduces working at height and manual handling activities



#### Cost savings:

Cheaper than traditional, manual services due to improved efficiencies and operations, with smaller footprint



#### Eco friendly:

Equipment runs on environmentally friendly hydraulic oil and all jobs can be assessed by our ecologists beforehand



#### Delivery:

Our state-of-the-art machinery, expertise and experience guarantees exceptional quality of work in the shortest amount of time



#### Quality:

Our award-winning service uses purpose-built machinery, operated by highly trained, competent teams

### What we do

Our mechanical arboriculture division offers the following services:

Tree shearing • Whole tree chipping • Mulching • Site and land clearance • Excavations • Weed raking • Stump removal • Grass cutting • Ditching • Dredging • De-silting • Reinstatement works • Translocation of turf for wildlife habitats • Lake and lagoon creation • Riverbank reinstatement • Earth move

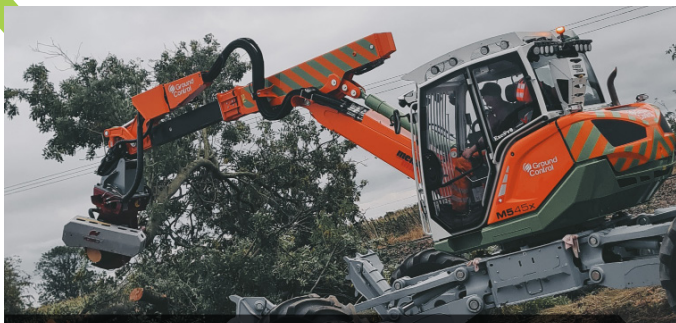
To learn more about our equipment and services, visit:

[www.ground-control.co.uk/mech-arb](http://www.ground-control.co.uk/mech-arb)

Telephone number: 0800 031 8221



# STATE-OF-THE-ART EQUIPMENT FOR HIRE



## Menzi Muck 545X

An extremely versatile machine with 9-tonne lifting capability, Engon system fitted for extra manoeuvrability and quick attachment changes. Comes with numerous attachments. Ideal for steep slopes and any terrain.



## Kobelco SK270SRLC

Large 27-tonne base weight, 17m reach with extension arm, 550 mm cutting capacity. Comes with a wide range of attachments. Ideal for very large trees and long reaches.



## Kobelco SK140

A robust, 14 tonne tree-felling machine with low ground pressure, and rubber pads, providing exceptional traction whilst protecting delicate vegetation.

[www.ground-control.co.uk/kobelcosk140](http://www.ground-control.co.uk/kobelcosk140)



## Kubota KX 080-4

Compact size, 250mm cutting capacity, low ground pressure, comes with a wide range of attachments. Ideal for sensitive, space-constrained sites such as wetlands.

[www.ground-control.co.uk/kubota](http://www.ground-control.co.uk/kubota)



## Bandit 20XP 315HP Whole Tree

Radio remote-controlled, large whole tree chipper on a rubber-tracked base. 26/32" conveyer fed infeed, can produce 100 cubic metres of woodchip per hour.

[www.ground-control.co.uk/bandit](http://www.ground-control.co.uk/bandit)



## Valtra T254 / 172 V

Fully forestry guarded with protective glass. Both come with a wide choice of attachments making them extremely versatile to suit all needs.

[www.ground-control.co.uk/valtra](http://www.ground-control.co.uk/valtra)

To learn about our equipment for hire and to get in touch, please visit:

[www.ground-control.co.uk/mech-arb](http://www.ground-control.co.uk/mech-arb)

Telephone number: 0800 031 8221

